

# NeoR aluminium panel

EVEN MORE ERGONOMIC SHELLS



# NeoR aluminium panel

Even more ergonomic shells with lightweight alu panels

The new aluminum panel combines maximum ergonomics with proven PASCHAL quality – a real game changer for site managers and teams who focus on efficiency.



## HOLDING GRIP

*Thanks to the grab handle, the formwork can be easily assembled and realised by hand.*



## EXTERNAL CLAMPING POINTS

*The external clamping points guarantee the lowest number of clamping points and therefore an optimum clamping point pattern.*

## PASCHAL PLYWOOD

*The particularly resilient and already proven Plywood consists of 9-layer, 12 mm thick Finnish birch plywood.*

## HANDLE BAR

*Profiled handle strip for even better handling.*



## FUNCTION BAR

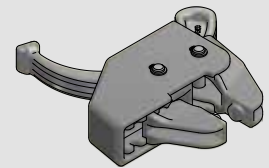
*All accessories can be attached to the function bar.*

## LIFTING EDGE

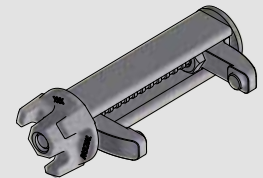
*Reinforced solid frame corners with lever edge*



## Connecting piece



NeoR tensioner 75



NeoR multi clamp 0-10 cm



Keybolt aluminum-steel

## The advantages of NeoR aluminum elements at a glance:

- **Low weight:** Weighing just 23 kg, the 75 x 150 cm panel is ideal for crane-free use and makes handling on the construction site much easier.
- **Strong performance:** The panel is designed for fresh concrete pressures of up to 50 kN/m<sup>2</sup> and meets the highest standards. Precision according to DIN 18202.
- **Compatible with all PASCHAL systems:** Thanks to the NeoR tensioner 75, aluminum and steel elements can be easily combined – flexibility that opens up new possibilities for you.
- **Easy to use:** The NeoR multi clamp 0-10 cm also makes it easy to compensate for residual dimensions. While the steel-aluminum Keybolt a cost-efficient connection.
- **Durable for sustainable use**

