

LOGO support bracket

Supports the formwork for cycled concreting

The adjustable LOGO support bracket supports the formwork for cycled concreting in locations where platforms cannot be installed. It is used to set up and fasten the formwork, which is secured against displacement with the wedge clamp. The height of the LOGO support bracket is variable up to 5.3 cm.

Benefits

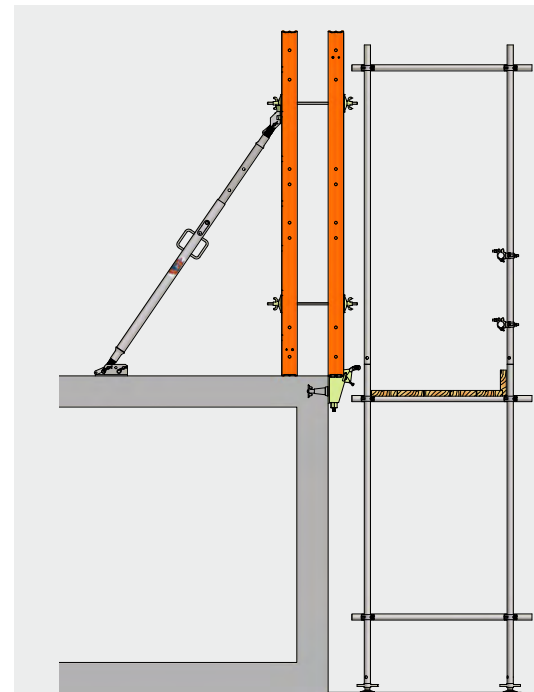
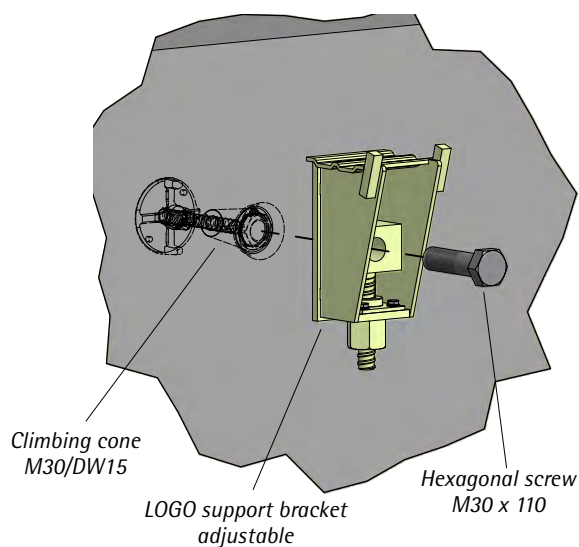
- Permissible vertical load of 15 kN
- Option of fixing the formwork with the wedge clamp
- Height adjustable to 5.3 cm
- Matching locking cones available for the anchor
- Avoids expensive solutions at the construction site
- Rapid assembly and dismantling

Optimal use with easy handling

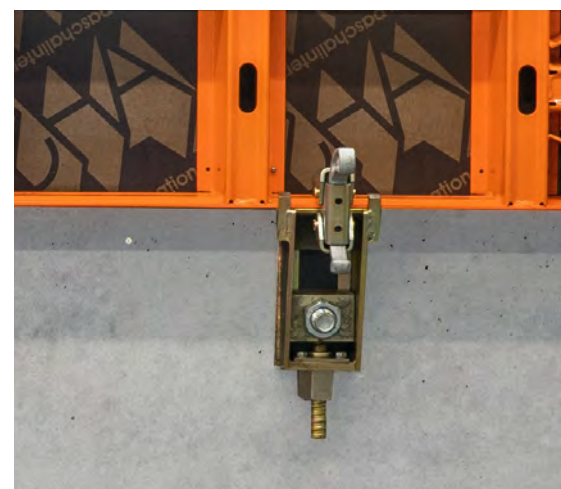
If no work platform is used, the LOGO support bracket is used from the second wall height stroke to ensure safe installation of the LOGO panels. The surface, which is perfectly matched to the panel frame, offers a flush support surface for the formwork panels.

For this purpose, the support bracket is attached to previously installed anchor cones at predefined fixed distances. The LOGO panel is then placed on the support brackets with the crane and secured to the support brackets by means of a wedge clamp.

Thanks to the height adjustment, the formwork panel can be brought into the perfect formwork position with the help of the LOGO support bracket.



The LOGO support bracket enables the safe installation of LOGO panels without a working platform.



In order to connect the formwork in a force-locking manner, it is fastened to the support bracket by means of the wedge clamp.