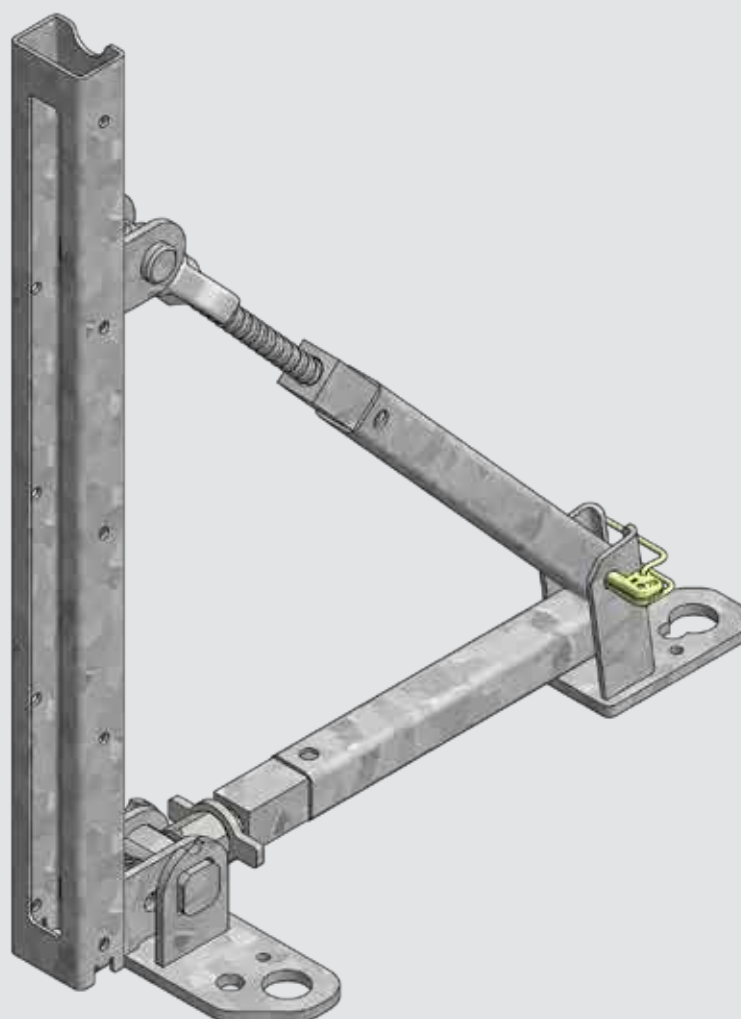


Flixstop

FLEXIBLE TRESTLE



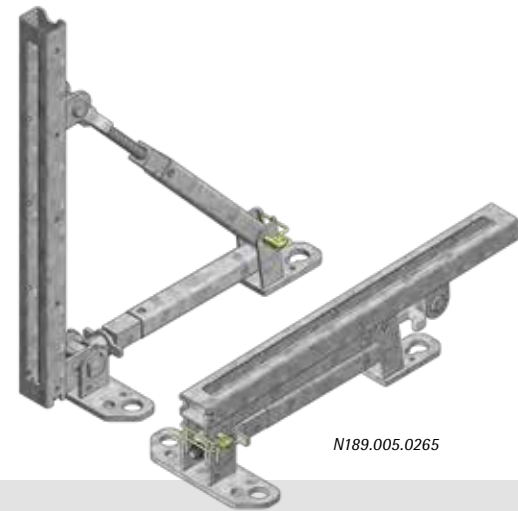
Flixstop

Flexible support frame for low scarf heights

Fast, flexible & simple: The Flixstop enables the economical shuttering of floor slabs and foundations up to 90 cm high.

Can also be used for height offsets in floor slabs and ceilings, as well as for overlays and attics.

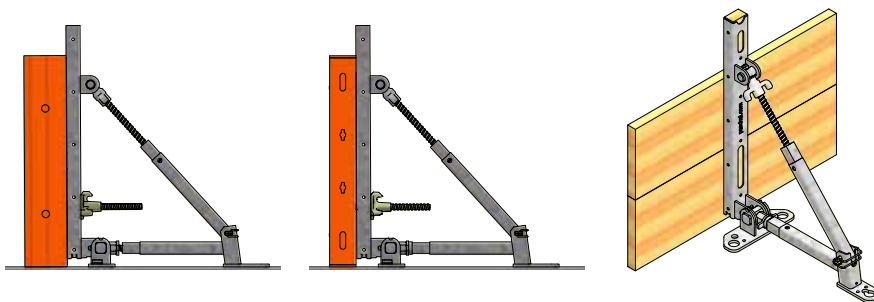
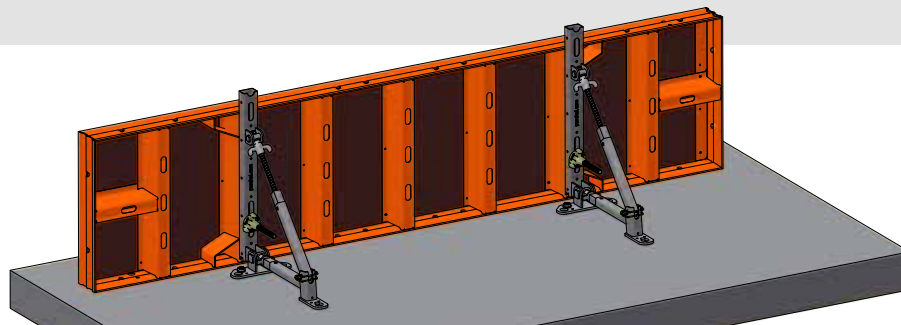
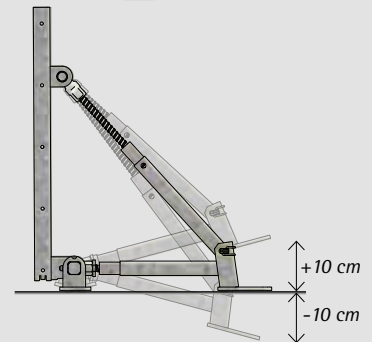
With an inclination of up to $\pm 15^\circ$, even inclined formwork can be held and unevenness in the installation surface can be compensated for.



N189.005.0265

The advantages of the Flixstop at a glance:

- **Lightweight and durable:** total weight of just 9.3 kg
- **Universally applicable:** The Flixstop can be used with all PASCHAL formwork, all frame formwork from a wide range of manufacturers, as well as to wooden formwork.
- **Simple anchoring:** using a ground nail or PASCHAL mounting screw
- **Dual variable adjustment:** This allows flexible adjustment to unevenness in the workspace and inclined formwork.
- **Space-saving storage and transportation:** all three profiles of the Flixstop can be easily can folded up in an articulated manner.



Flixstop distances

Concreting height	Permissible distance
30 cm	400 cm
45 cm	220 cm
60 cm	120 cm
75 cm	75 cm
90 cm	50 cm

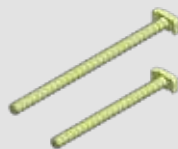
The values refer to the PASCHAL Flixbock, vertical formwork surface, concrete strength 15N/mm², PASCHAL assembly screws. Different distances may be required depending on the formwork used (formwork panels/timber planks).

Connecting piece



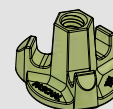
N189.001.0032
Waler guide 240
Clamp length 24cm

N189.001.0031
Waler guide 100
Clamp length 10cm



N187.500.0022
Hook head bolt
DW15x300/240

N183.500.0034
Hook head bolt
DW15x220/160



N189.001.0001
Wing nut DW15