

# DePaDeck

MODULAR SLAB FORMWORK MADE OF ALUMINIUM

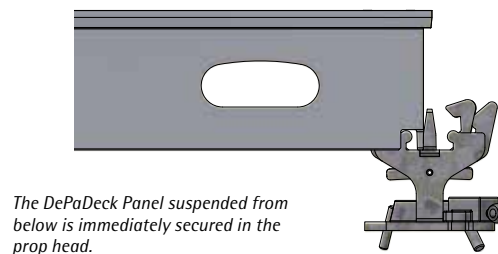
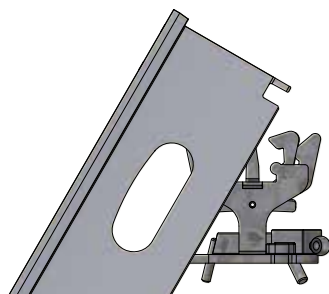
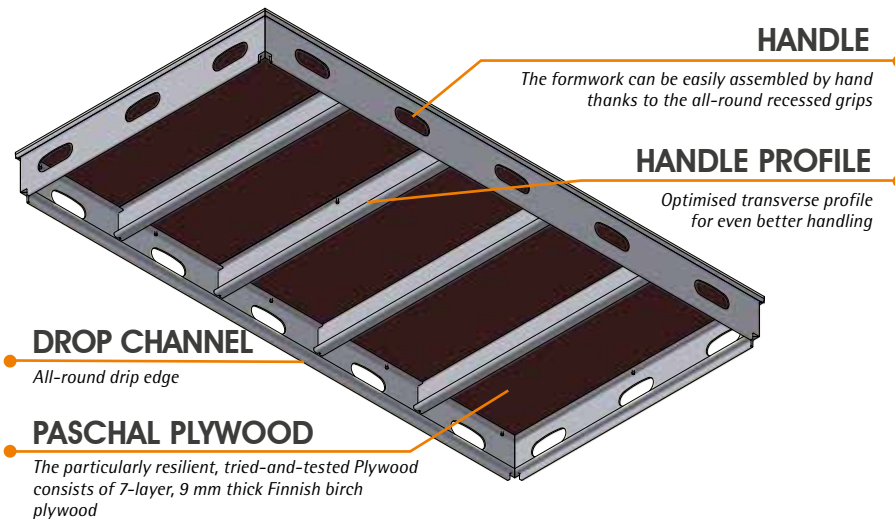


# DePaDeck

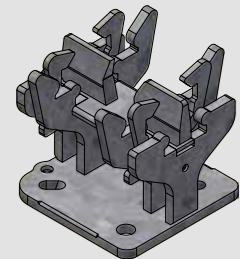
## Modular slab formwork made of aluminium

Efficiency and lightness raised to a new level.

The DePaDeck impresses with its low weight, versatility and sophisticated details. This innovation makes it easy to form floor plans of any size and geometry - perfect for the requirements of the modern construction world.

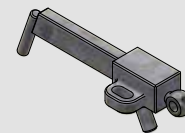


## Only ONE prop head



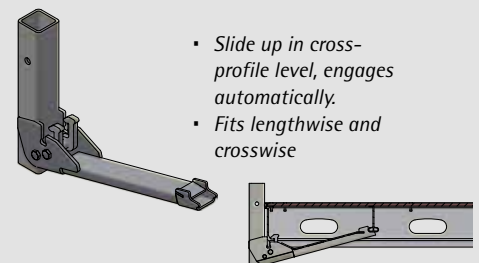
- One prop head for all applications
- Fits anywhere on the panel
- Lifting lock
- Panels can be hooked into the prop head and swung up
- Panels can be removed from the structure

## Innovative quick connector



- No on-site bolting
- Suitable for all common props

## Adapter for Secuset



- Slide up in cross-profile level, engages automatically.
- Fits lengthwise and crosswise

## The advantages of DePaDeck at a glance:

- **Lightweight:** The DePaDeck Panel 160 x 80 cm weighs only **19 kg**.
- **Powerhouse:** Ceiling thicknesses of **up to 55 cm** are possible **without** additional support.
- **Safe installation:** Panels are hooked in from the ground and **automatically secured**.
- **Innovative prop head:** Fits **all standard props** with 80 x 80 hole pattern.
- **Innovative quick connector:** Enables **tool-free assembly** - for maximum efficiency.
- **Safety on the formwork too:** the adapters for Secuset fit **lengthways and crossways** on the panels.
- **Reduced labour and construction time:** thanks to **just one prop head** for the panel method.
- **Sustainability included:** aluminium construction for a **long service life** and environmentally friendly Efforts.

