

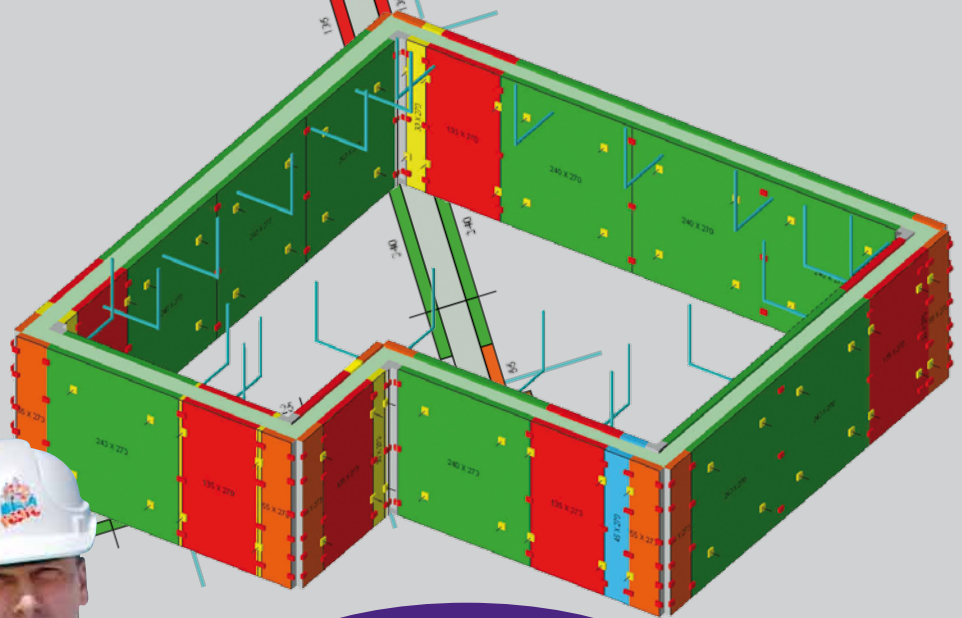


Test now!
Online test access now at
www.ppl-cloud.com

The key software solution for you formwork tasks

PPL 10.0 PASCHAL-Plan light

Now in 3D and with complete
warehouse management



NEW



Nelly Teurlay, GTM Construction / Vinci Group, Les Magny; Alfred Schweitzer, PASCHAL SARL, Alsace



Service in Formwork + Shoring

NEW

PASCHAL-Plan light 10.0

the key software solution for your formwork tasks

The more challenging a building project, the more challenging the necessary work planning to keep the material and wage costs as low as possible. Easy-to-use PC programs have been simplifying these complicated tasks for several years now. Exact, clearly organised formwork drawings and an optimal material planning help the work on your building site more reliably and quickly.

The formwork planning and warehouse management software PASCHAL-Plan light (abbreviated to PPL) supports every building contractor or planning engineer in large building firms so that the use of formwork can be planned to the very best and the site can be supplied in due time with the necessary equipment available in the warehouse.

For this reason, the new PPL version 10.0 now consists of two modules. Complete formwork plans are created fully automatically with the ‚Design‘ module. Now in 3D too! You manage your entire building yard warehouse and current construction projects with the ‚Warehouse‘ module.

■ Material lists

After you have entered the layout and selected the formwork system, PPL calculates the optimum positioning of formwork panels for your project and draws up a complete list of all necessary materials for different formwork phases too.

■ Concreting phase information

On the basis of the so-called concreting phase information, PPL calculates important data that you need such as formwork surface, formwork weight, concrete volumes, forming times.

■ Simple layout input

No knowledge in CAD is necessary to run PPL with all its features; many functions are practically self-explanatory. You can design your first simple object with just a few clicks. Of course automatically in 3D! In next-to-no-time you can create even complicated layouts quickly.

You can naturally also import layouts via the integrated DXF interface.

As soon as the layout is finished, the most favourable positioning of formwork panels is calculated, on demand in considering the available stock in your warehouse.

■ 3D models

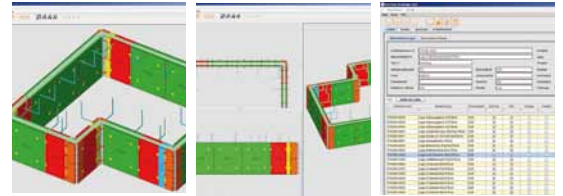
The new version 10.0 enables spatial representation of the projects. Floor-plan input and placement of formwork elements and accessory parts occurs automatically in 3D. Thus you can view current projects spatially from all sides.

■ Detailed solutions

Even the tiniest details can be shown in PPL using various zoom functions. It goes without saying that you can also print these excerpts true to scale.

■ Manual editing

You can edit automatically created formwork plans at any time. The new version 10.0 allows manual editing of formwork elements and accessory parts. Naturally this is possible in the top view, the side view, or the 3D model.



PPL 10.0

- JAVA technology
 - Platform independent
 - Compatible with Windows and Mac
 - Local and on-line version available
 - Available for sale or for rental
-
- Module Design and Warehouse
 - Every module can be used separately

New features for Design module

- Demonstration in 3D
- Extended layout-input (gable walls, slopes on top of walls or bottom slaps)
- Integrated CAD functions
- Several formwork systems can be used in one project
- Dynamic material list available

New features for Warehouse module

- Complete warehouse management (formwork, building devices, building machines, accessories, etc.)
- Clear site management (delivery, return, stock controlling)



Now in 3D and with complete warehouse management

PASCHAL

Service in Formwork + Shoring