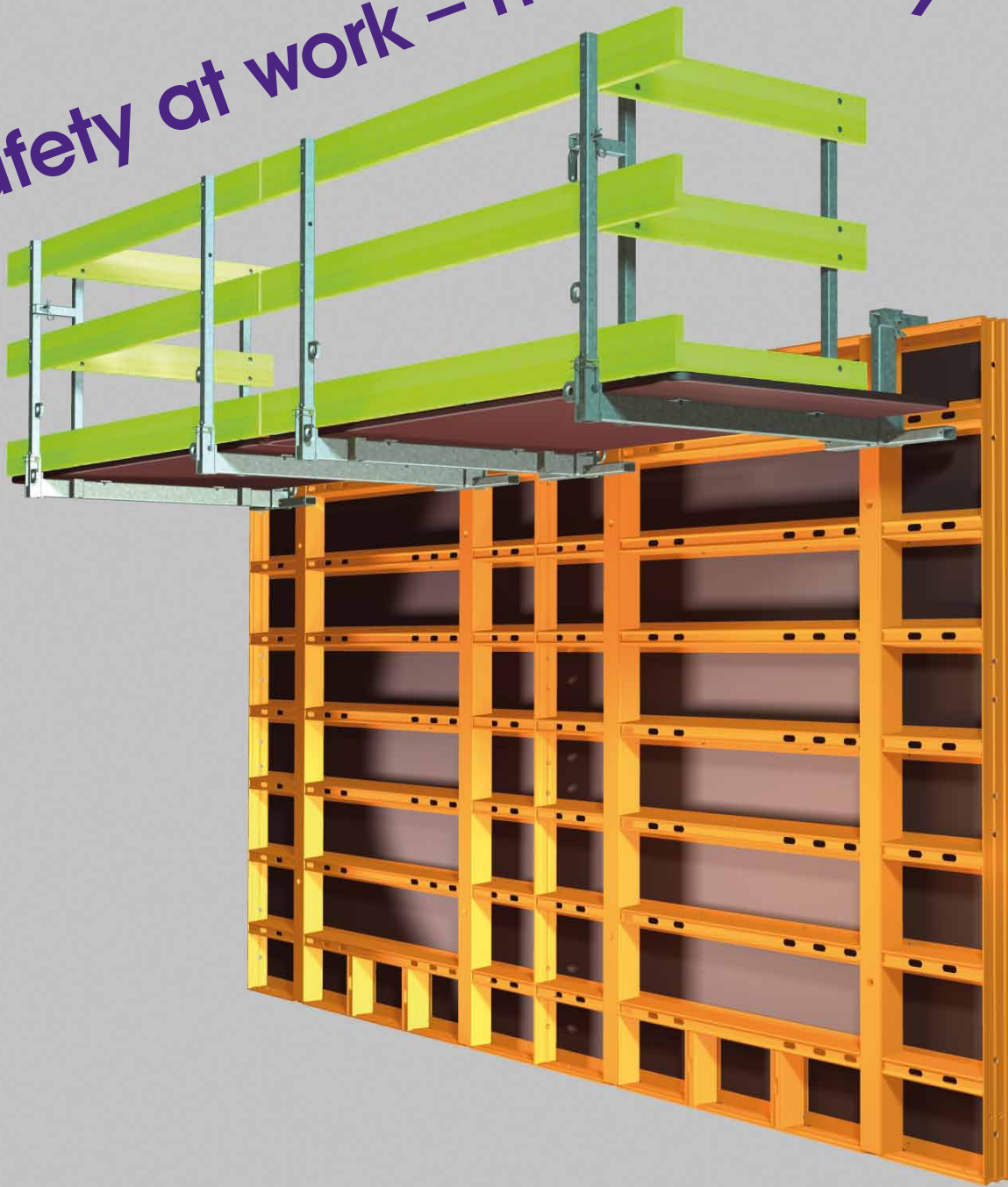


Safety at work – make it easy



**...with the
LOGO.3 Concreting platform**

PASCHAL
Service in Formwork + Shoring

LOGO.3 Concreting platform

Safety at work – make it easy

As complete part, the concreting platform is comprised of two stiffening brackets, the boarding and a guard railing. All components are connected together by articulating joints and can be folded up in a space-saving way for transport or storage.

To use the concreting platform on the formwork, the guard railing and the suspending pieces are folded out, and the complete platform can be hung on the formwork. The locking device of the platform latches automatically to the formwork panel after the crane tackle is released. At this point the board surface is roughly 30 cm below the upper edge of the formwork. The platform can be connected to standing and lying panels, but also to several small panels. Compensation elements between two platforms are possible up to a length of 1.00 m.

This means that the time consuming and consequently expensive installation of individual platform brackets, which must be supplemented by on-site boards and planks as lateral protection, is unnecessary.

That's why the concreting platform is the faster and more economical way to set up a safe working area with a width of 1.10 m and a length of 2.40 m. Added to that, all of the components necessary for safety are always automatically included on the main part. A lateral protection for the stop-end is also available.

Benefits:

- **Unfolded and installed quickly as complete part**
- **No repeated loss and repurchase of timber for boarding and railings**
- **Wide and safe work area**
- **Permissible surface load 1,50 kN/m²**



**Ask your Formwork Consultant
or the Manager
Export Team**



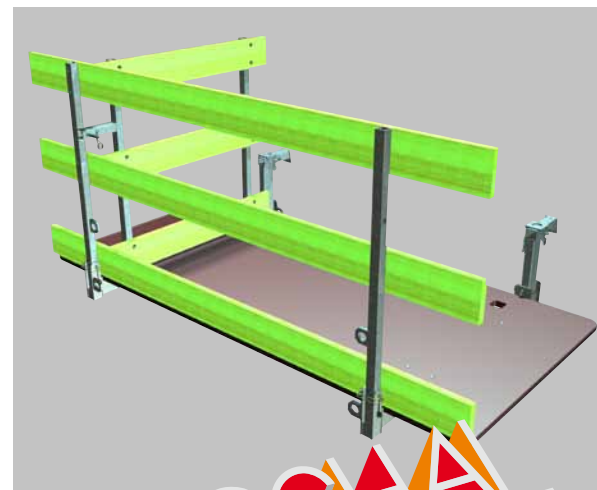
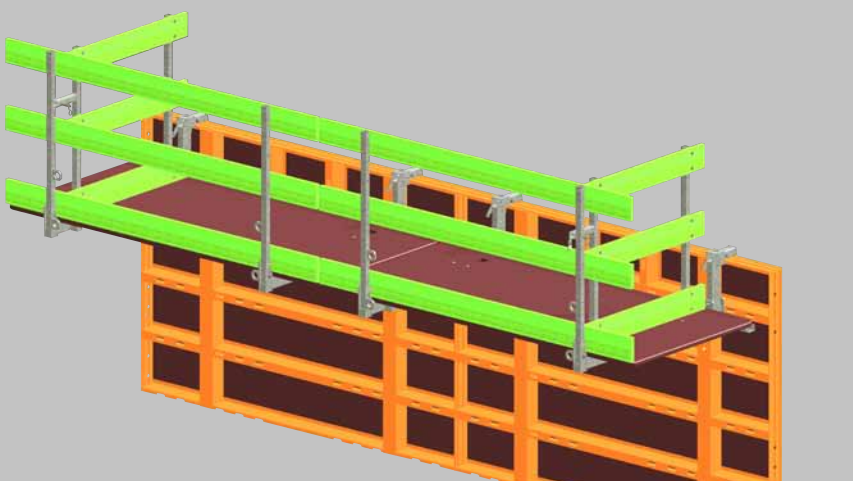
Winfried Stoll

Phone: +49 (0) 78 32 / 71 - 242

winfried.stoll@paschal.de



Concreting platforms can be folded for transport or storage to save space.



PASCHAL
Service in Formwork + Shoring