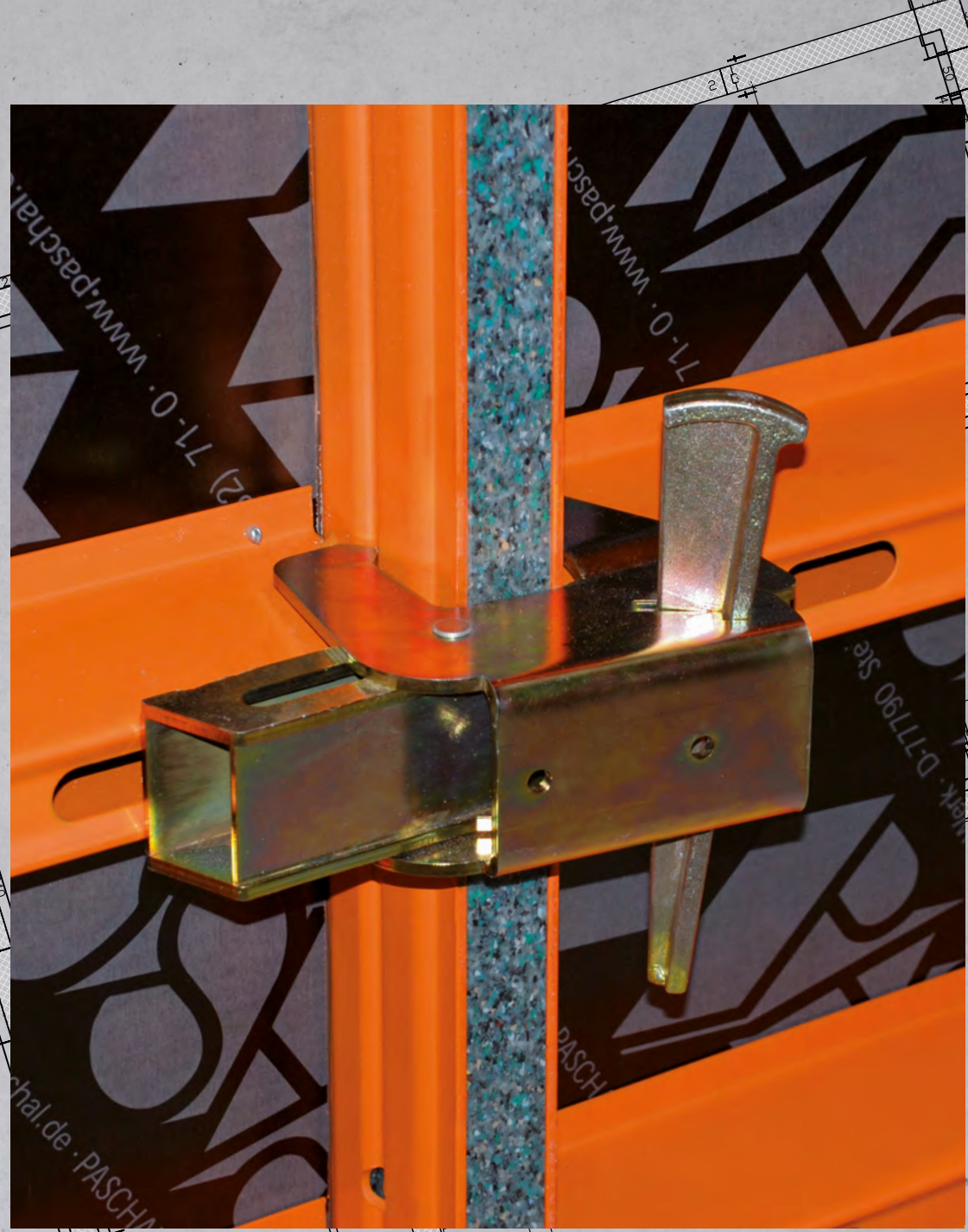




LOGO multi-clamp

PRODUCT INFORMATION



LOGO multi-clamp

The multifunctional connecting piece

As a variable connecting piece, the multi-clamp enables the installation of filler pieces between two panels of formwork systems LOGO.3, LOGO.alu, LOGO.S and LOGO.pro. Depending on the design variant, the adjustment range is infinitely variable between 0 and 10 cm or 0 and 20 cm.

The multi-clamp thus enables forming with centimetre-level precision in the system and also guarantees a tight, flush and aligned connection.

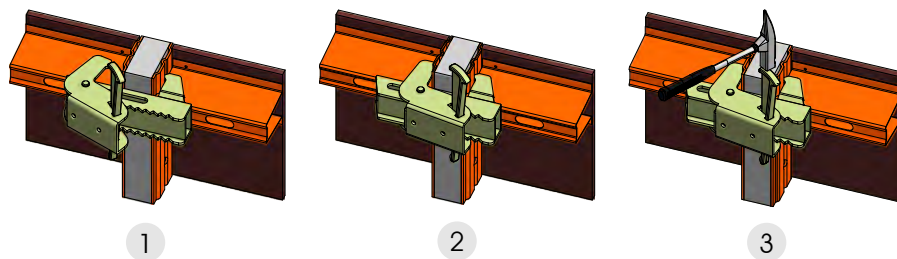
Benefits

- Ergonomic working
- Infinitely variable adjustment range of 0-10 cm or 0-20 cm
- Robust and long-lasting
- Rapid assembly and dismantling

Ergonomic working

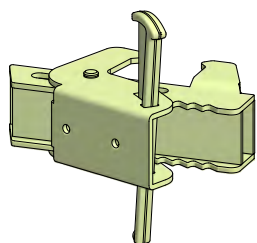
As it can easily be operated from the front, it ensures ergonomic work. The integrated wedge simply needs to be hammered firmly downwards into the housing teeth to fix the multi-clamp in place.

Attaching the multi-clamp to the hat profile brings the formwork into perfect alignment.

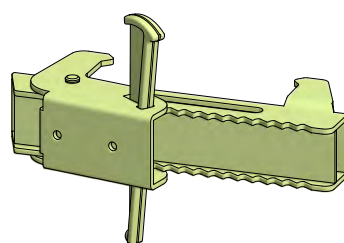


Extended adjustment range for even more applications

The large adjustment range means that it is even possible to install a panel up to 20 cm wide, with a single clamp engaging over the two panel joints.



LOGO multi-clamp 0-10 cm
Art.No. : N187.500.0004



LOGO multi-clamp 0-20 cm
Art.No. : N187.500.0175



The LOGO-multi-clamp allows the installation of filler pieces of up to 10 cm or 20 cm wide.



When used with compensation panels, it reduces by 50 % the number of connecting pieces to be attached.