

PPL 12.0

PASCHAL-Plan light

Product Information



PASCHAL

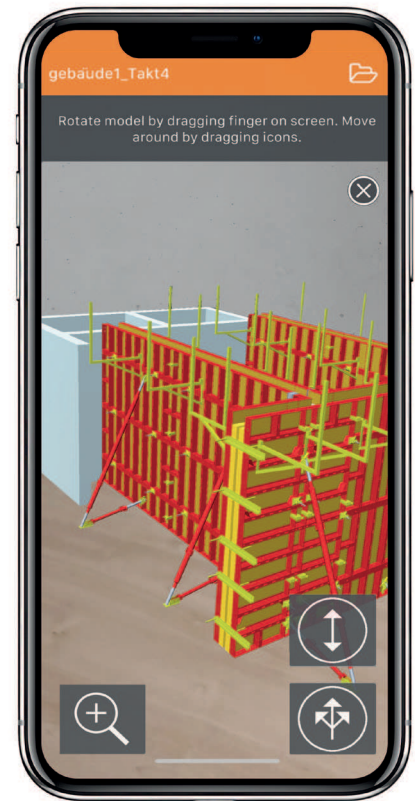
Service in Formwork + Shoring

PPL 12.0

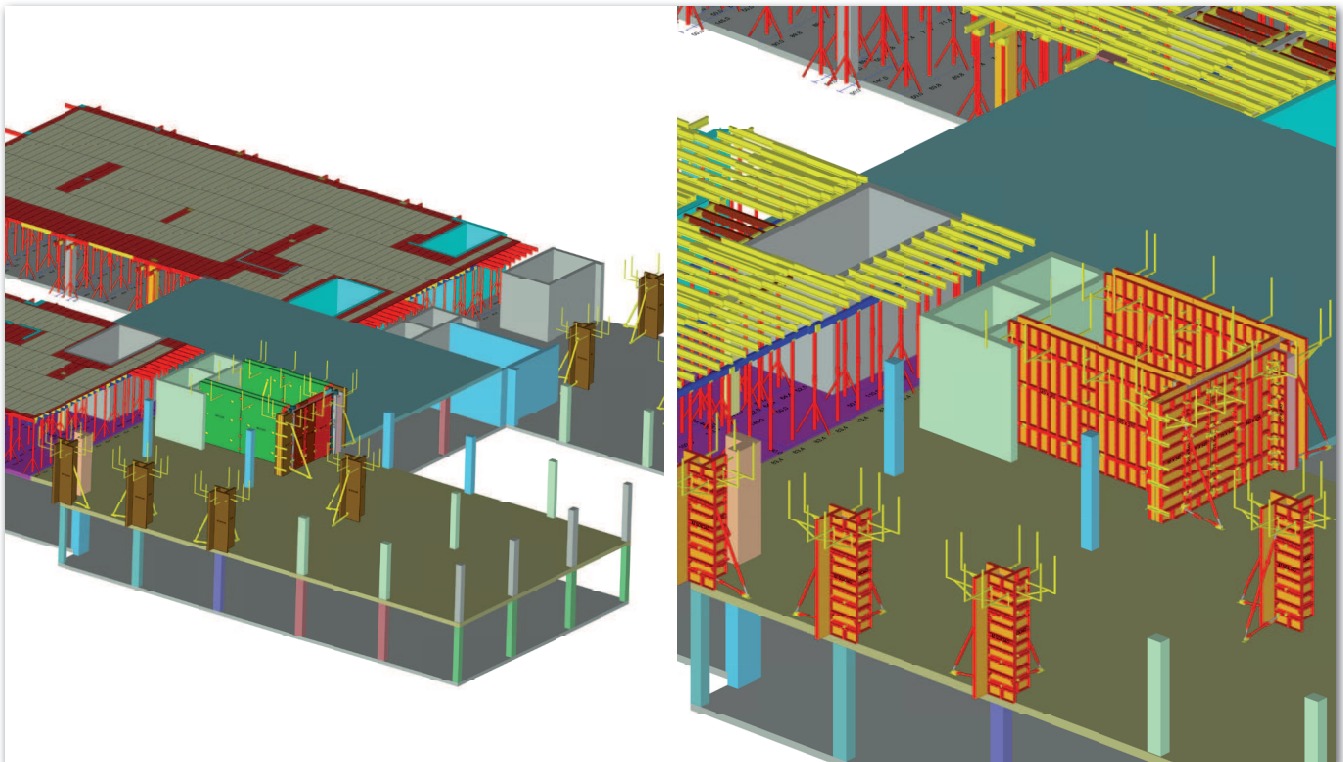
By BIM experts for BIM users, from planning and construction through to completion.

With PPL 12.0, using the digital 3D models for work preparation, cycles and automatic formwork planning with material lists for scheduling and managing the formwork is made a reality across the board. The interface to the PASCHAL AR app makes it possible to use in mobile form on the construction site.

- IFC interface for importing and exporting data
- Module 60/120 for manufacturer-independent formwork planning
- Fully automatic formwork planning with the possibility of individual adaptation
- Warehouse module for material transparency
- Interface to the PASCHAL AR app



Mobile data use with the interface from PPL 12.0 to the PASCHAL AR app



PPL 12.0 - the fully automatic formwork software supports the construction workflow of the entire project during the formwork planning and all construction phases, including material scheduling and administration up to the formwork assembly and dismantling times for the reliable work preparation for the optimal construction workflow in relation to the building schedule.

www.planitec.com

PASCHAL-Werk G. Maier GmbH · Kreuzbühlstraße 5 · 77790 Steinach · Germany
Phone: +49 7832 71-0 · Fax: +49 7832 71-209 · service@paschal.de · www.paschal.com

PASCHAL
Service in Formwork + Shoring